

Approved by



A Project by



SANVI'S KOWSALYA VIDHAATA

A TRADITION OF TRUST

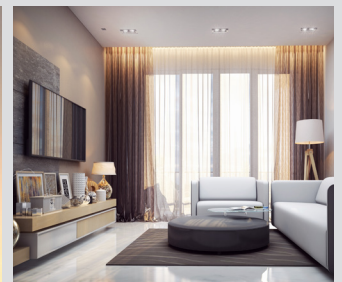
2 & 3 BHK DELUXE APARTMENTS @ KALYAN NAGAR, NEAR S.R. NAGAR



WAITING FOR THE
PERFECT HOME

PROJECT HIGHLIGHTS

- Quality construction
- 100% vaasthu compliant
- Excellent ventilation
- Intercom Facility
- Ample car parking
- Provision of car charging points for each flat at designated parking area
- Video door calling bell
- Safety grills for utility and corridor
- Rain water harvesting pit
- No common walls
- CC TV surveillance
- Providing individual pipe lines with water meters from overhead tank



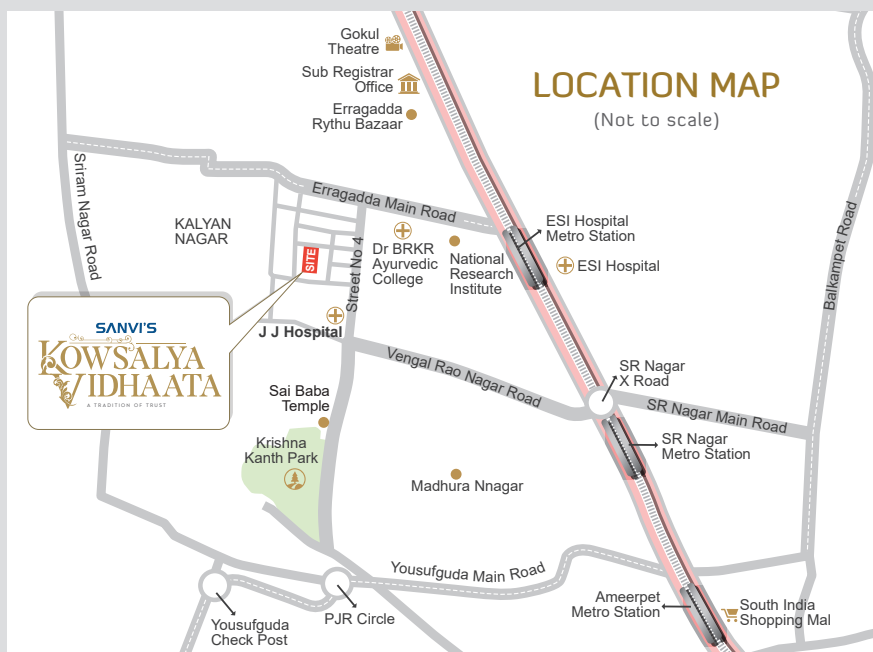
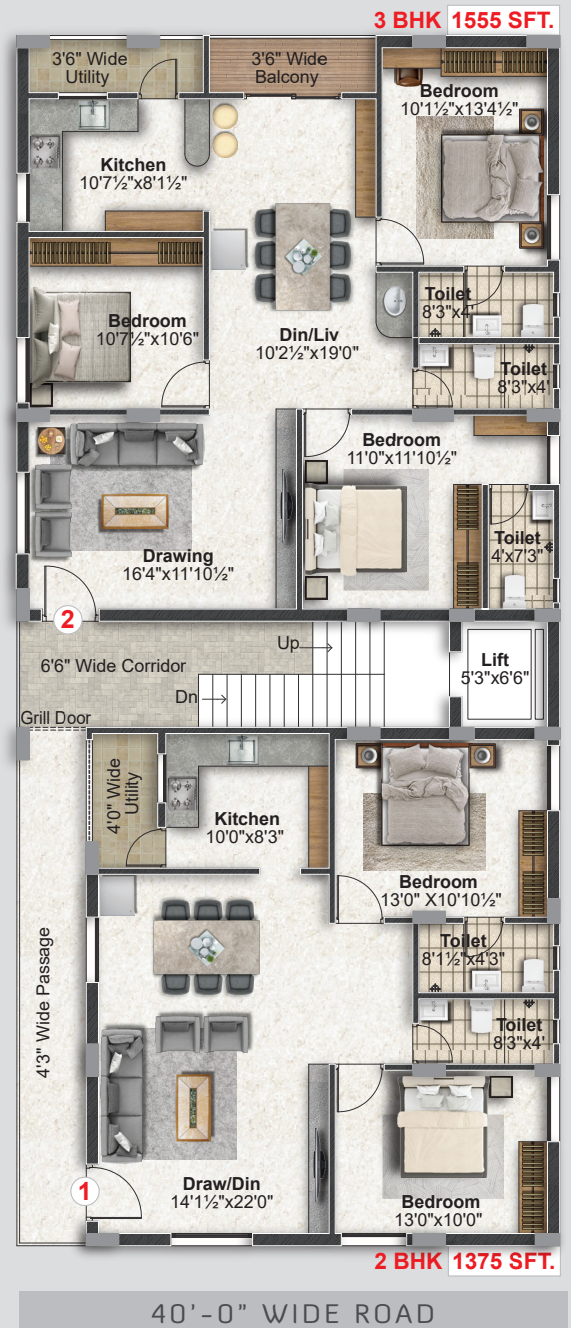
Contact Numbers : 91211 44191, 91548 29354

SPECIFICATIONS



TYPICAL FLOOR PLAN

<p>STRUCTURE RCC framed structure</p> <p>SUPER STRUCTURE Red burnt bricks with cement mortar (Outer walls of 9" and Internal walls of 4½" thickness)</p> <p>PLASTERING Plastering in cement mortar in double coat with sponge finish - Inside & Outside</p>	<p>STAIRCASE & CORRIDOR Granite and S.S. Railing, PoP False ceiling</p> <p>ELECTRICAL Concealed PVC pipes and copper wiring with adequate points for lights, fans, calling bell, Refrigerator, TV, Telephone, Internet AC and Inverter (Polycab / Finolex Cable and Legrand Switches (or) equivalent make)</p>
<p>FLOORING Double charged Vitrified Tiles of 32" x 32" (800 mm x 800 mm) size</p> <p>DOORS AND HARDWARE Main door teak wood frame with teak wood shutter and Godrej lock with designer handle Internal Doors: All doors are made with teak frames with designed flush shutters with standard hardware</p>	<p>PAINTING Internal Walls : Putty finish and Tractor Emulsion Paint. External Walls : Asian Apex Paint with Wall Care putty and Texture Common areas : Putty finish and Asian Tractor Emulsion Paint</p> <p>GENERATOR DG back-up for flats inside fans, light points, lift, motors, staircase, corridors and common areas</p>
<p>WINDOWS All windows are UPVC sliding glass doors, mosquito proof mesh and safety grills</p> <p>KITCHEN Granite platform and Stainless Steel sink with 2'-6" height glazed tiles</p> <p>SANITARY & TAPS Single piece WC siphonic system of HINDWARE or CERA make</p> <p>TOILETS Ceramic Tiles up to 6'-9" height</p>	<p>LIFT 6 Passengers capacity of KONE make</p> <p>BALCONIES S.S. Railing with glass fittings</p> <p>CAR PARKING VDF Flooring</p> <p>NOTE 1) Modifications are not allowed 2) GST or any other taxes etc. shall be payable by the customer 3) Stamp Duty and Registration Fee etc. shall be payable by the customer</p>



Promoters



Creating "vāṣṭudāika kutumbam"

Plot No. 29, Kalyan Nagar, Near JJ Hospital, Hyderabad - 500 018, Telangana State

Sales : 91211 44191, 91548 29354

sales@sanviinfra.com



SCAN TO
WEBSITE